

# New Directors' Academy Sample Documents

ACET

Fall Conference

October 8, 2014

Dr. Jamie Bryson

Dr. Robert Meaux



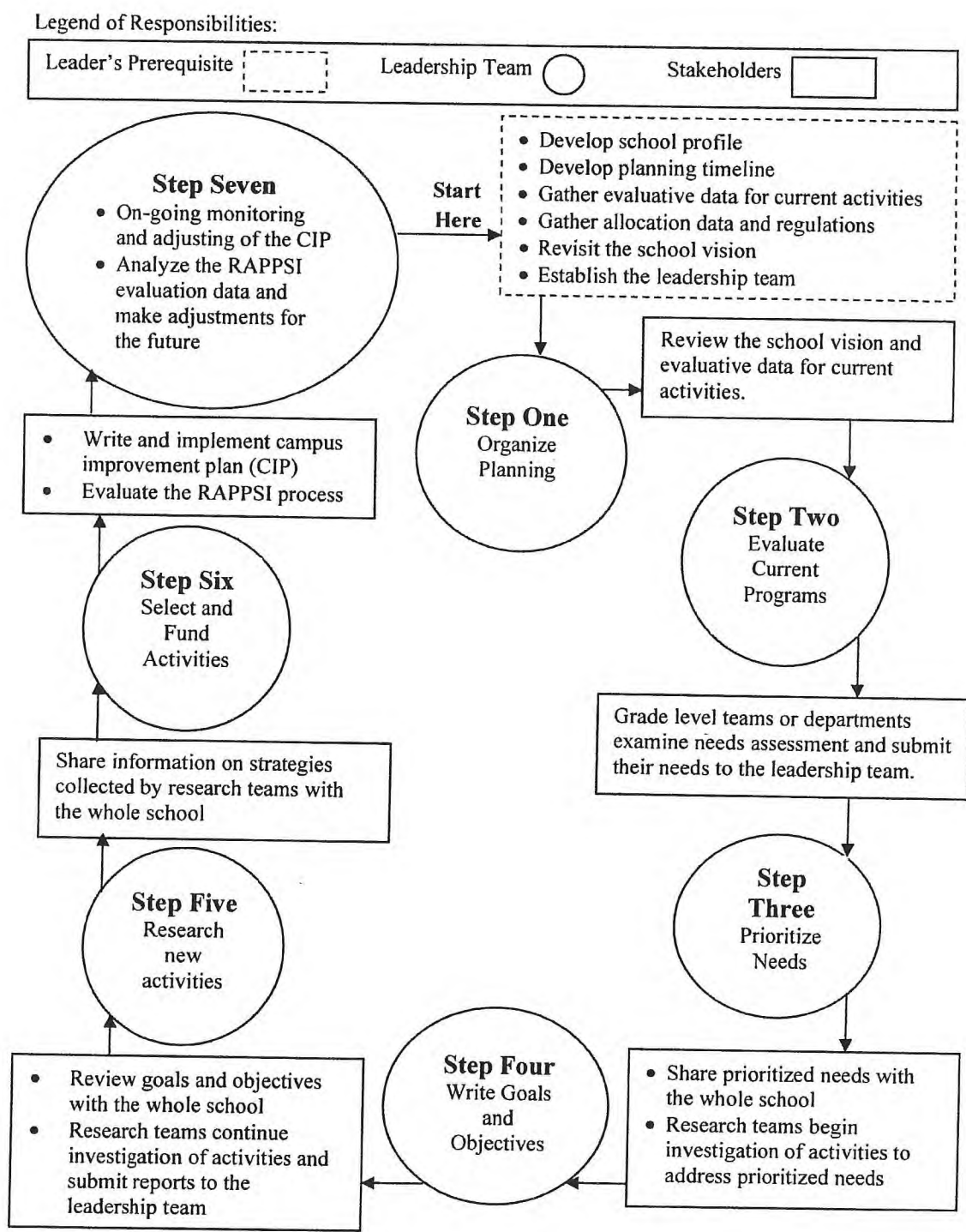


Figure 5

Resource Allocation Planning Process for School Improvement (RAPPSI)<sup>1</sup>

A

<sup>1</sup>From "The Resource Allocation Planning Process for School Improvement," by the STAR Center, 2003. Copyright 2003 by the STAR Center. Reprinted with permission of the author.

**Administrators**  
school resources

**Teachers**  
teacher resources

**Funding**  
school finance & grants

**Testing / Accountability**  
student assessment & ratings

**Curriculum**  
standards, college prep & programs

**Reports**  
data, statistics & research

**News & Events**  
communications & calendars

**ARRA/Ed Jobs**  
stimulus, stabilization, & ed jobs

- Alternative Schooling
- ⊕ About TEA
- Assistance - TEAL/ECOS
- Commissioner
- Complaints
- Copyrights/Royalties
- Dropout Information
- Early Childhood
- Education
- Education Laws & Rules
- Educator Certification
- Educator Login/Account Set Up
- Educator Preparation
- Enroll Your Child
- Fingerprinting
- GED ®
- Health and Safety
- No Child Left Behind
- ⊕ State Board for Educator Certification
- State Board of Education
- Weather/Disaster Information

## Financial Accountability System Resource Guide

The Financial Accountability System Resource Guide (FASRG) describes the rules for financial accounting for Charter Schools, Education Service Centers and School Districts. Texas Administrative Code (TAC) §109.41.

Exhibits A-1 and C-1 of the standard format for the Annual Financial and Compliance Report (Module 1 - FAR Appendices) have been updated as a result of changes to GASB 63 and 65.

[GASB Statements Nos. 63 and 65 - Changes to Financial Statement Reporting \(Word, 28 KB\)](#)

[Exhibits A-1 and C-1 \(Excel, 53 KB\)](#)

**The only changes made in Version 15.0 of the FASRG are minor changes made to Module 4. The remaining modules remain unchanged from Version 14.0. \***

**For reference (Version 14.0):**

[Module 4 Auditing](#)

### VERSION 15.0

[Instructional Materials Allotment - Accounting Transactions Update - November 8, 2011](#)

[Addendum - New Account Codes Update - May 23, 2011](#)

[Module 1 Financial Accounting and Reporting \(FAR\)](#) ← coding

[Module 1 FAR Appendices](#)

[Module 2 Budgeting](#)

[Module 3 Purchasing](#)

[Module 4 Auditing](#) \*

[Module 5 Site Based Decision Making](#)

[Module 6 Accountability](#)

[Module 7 Data Collection and Reporting](#)

[Module 8 Management](#)

[Module 9 State Compensatory Education](#) ← State Comp Ed

[Module 10 Special Supplement - Charter Schools](#)

[Module 11 Special Supplement - Non-Profit Charter School Chart of Accounts](#)

**Please contact the Division of Financial Accountability at [financialaccountability@tea.state.tx.us](mailto:financialaccountability@tea.state.tx.us) for historical versions of the FASRG & Charter School Supplements**

For additional information, contact:

Robin Aldridge (512) 463-3940 [robin.aldridge@tea.state.tx.us](mailto:robin.aldridge@tea.state.tx.us)

Yolanda Walker (512) 463-0947 [yolanda.walker@tea.state.tx.us](mailto:yolanda.walker@tea.state.tx.us)

Page last modified on 8/21/2013 11:42:14 AM.

B

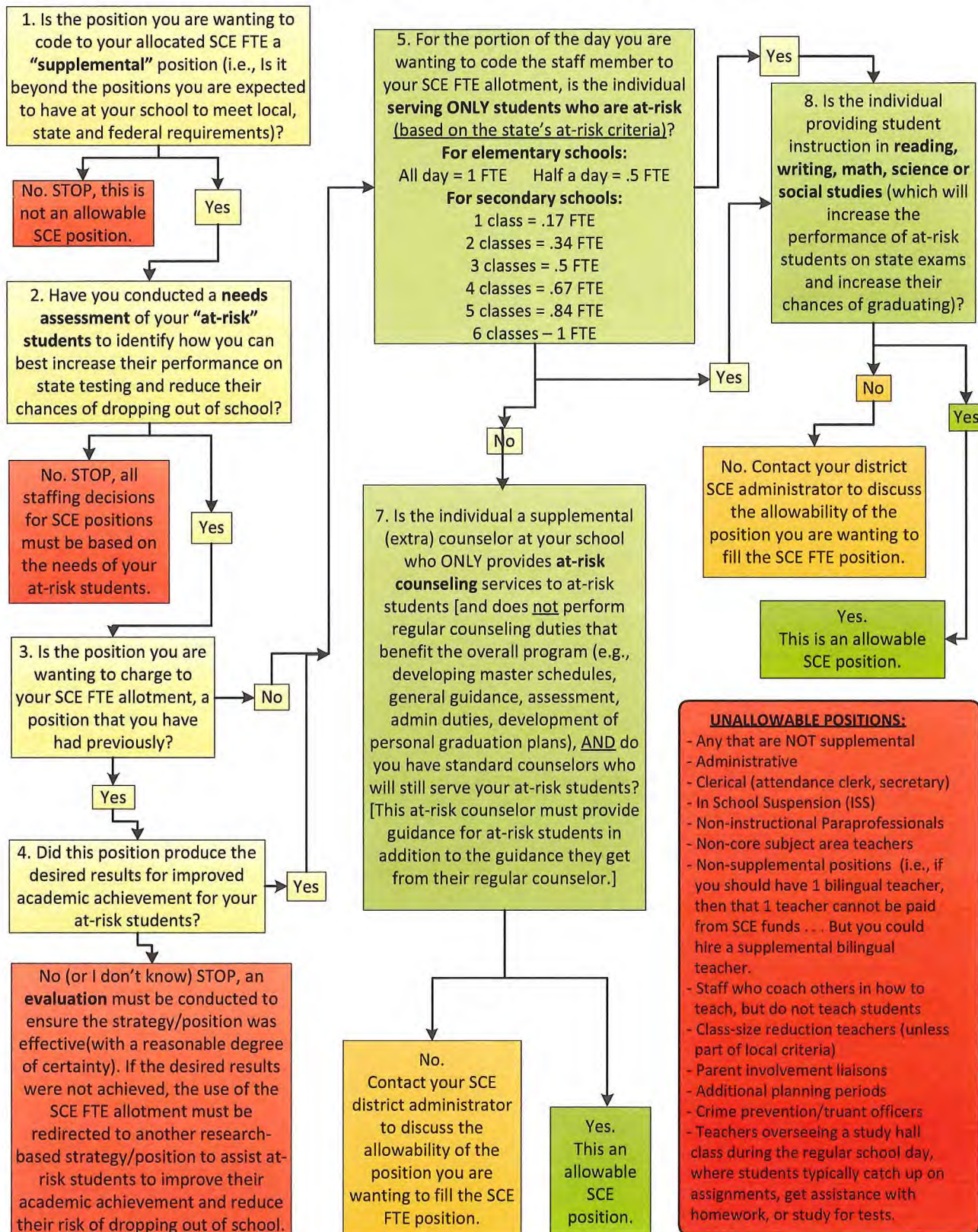
<b>Tier I Allotments</b>		<b>LPE</b>	<b>DPE</b>
<b>Program Intent Codes - Allotments</b>			
28.	11-Regular Program Allotment	\$179,791,133	\$179,791,133
29.	23-Special Education Adjusted Allotment (Spend 52%)	\$17,823,020	\$17,817,204
30.	22-Career and Technology Allotment (Spend 58%)	\$10,527,088	\$10,527,088
31.	21-Gifted & Talented Adjusted Allotment (Spend 55%)	\$1,145,674	\$1,145,449
32.	24-Compensatory Education Allotment (Spend 52%)	\$15,222,497	\$15,222,497
33.	25-Bilingual Education Allotment (Spend 52%)	\$1,592,935	\$1,592,935
34.	11-Public Education Grant	\$0	\$0
35.	99-New Instructional Facility Allotment	\$0	\$0
36.	99-Transportation Allotment	\$2,608,363	\$2,608,363
37.	31-High School Allotment	\$2,924,049	\$2,924,049
38.	Total Cost of Tier I	\$231,634,759	\$231,628,717

C



# State Compensatory Education (SCE) Guidance

## Identifying if a position is an allowable State Compensatory Education (SCE) FTE



Dr. Jamie Bryson 2014

